

PLAT OF C-4

AT HERITAGE RIDGE A P.U.D.
A PORTION OF THE GOMEZ GRANT, MARTIN COUNTY, FLORIDA.

CLERK'S RECORDING CERTIFICATE

I, MARSHA STILLER, CLERK OF THE CIRCUIT COURT OF MARTIN COUNTY, FLORIDA, HEREBY CERTIFY THAT THIS PLAT WAS FILED FOR RECORD IN PLAT BOOK 12, PAGE 16, MARTIN COUNTY, FLORIDA, PUBLIC RECORDS THIS _____ DAY OF _____, 1989.

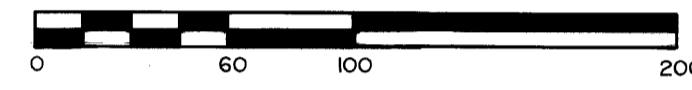
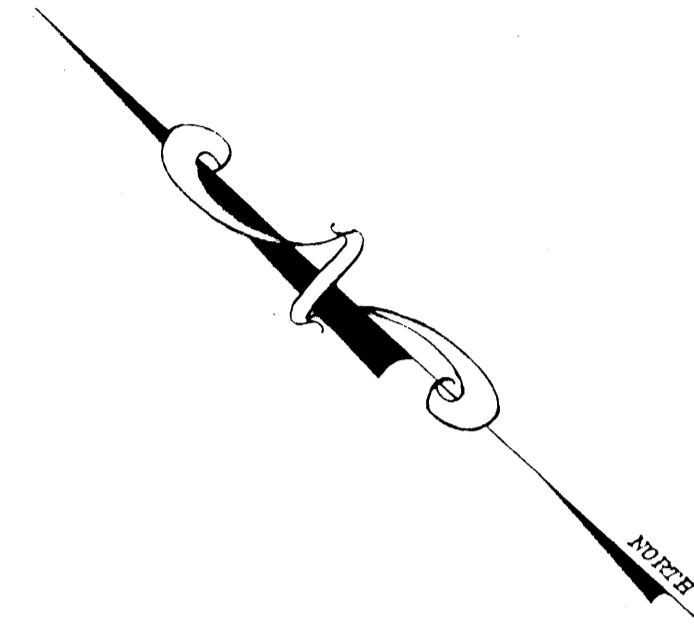
MARSHA STILLER, CLERK OF THE CIRCUIT COURT MARTIN COUNTY, FLORIDA.

FILE NUMBER _____ BY _____ DEPUTY CLERK

SUBDIVISION PARCEL CONTROL No. _____

SHEET 2 OF 2 SHEETS

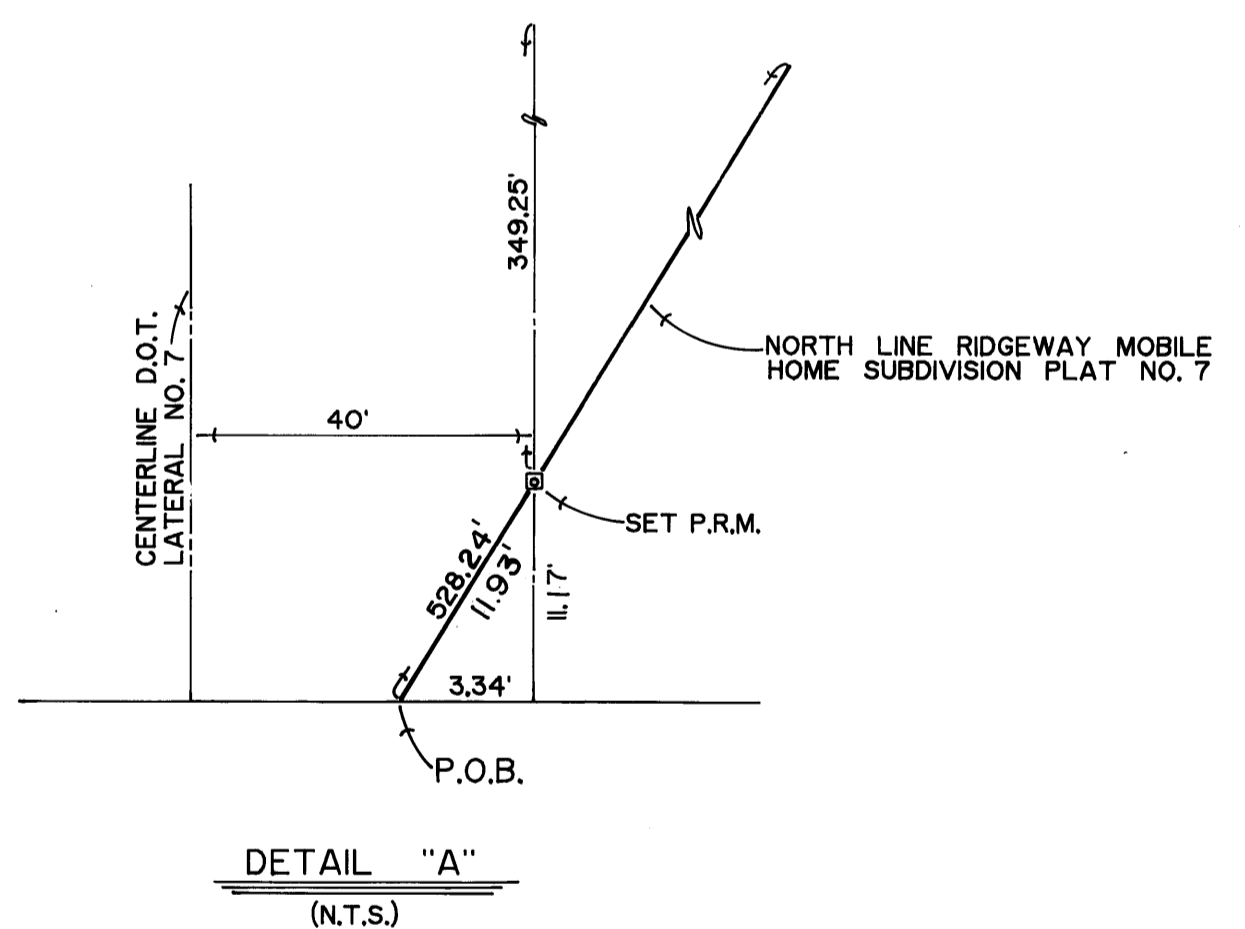
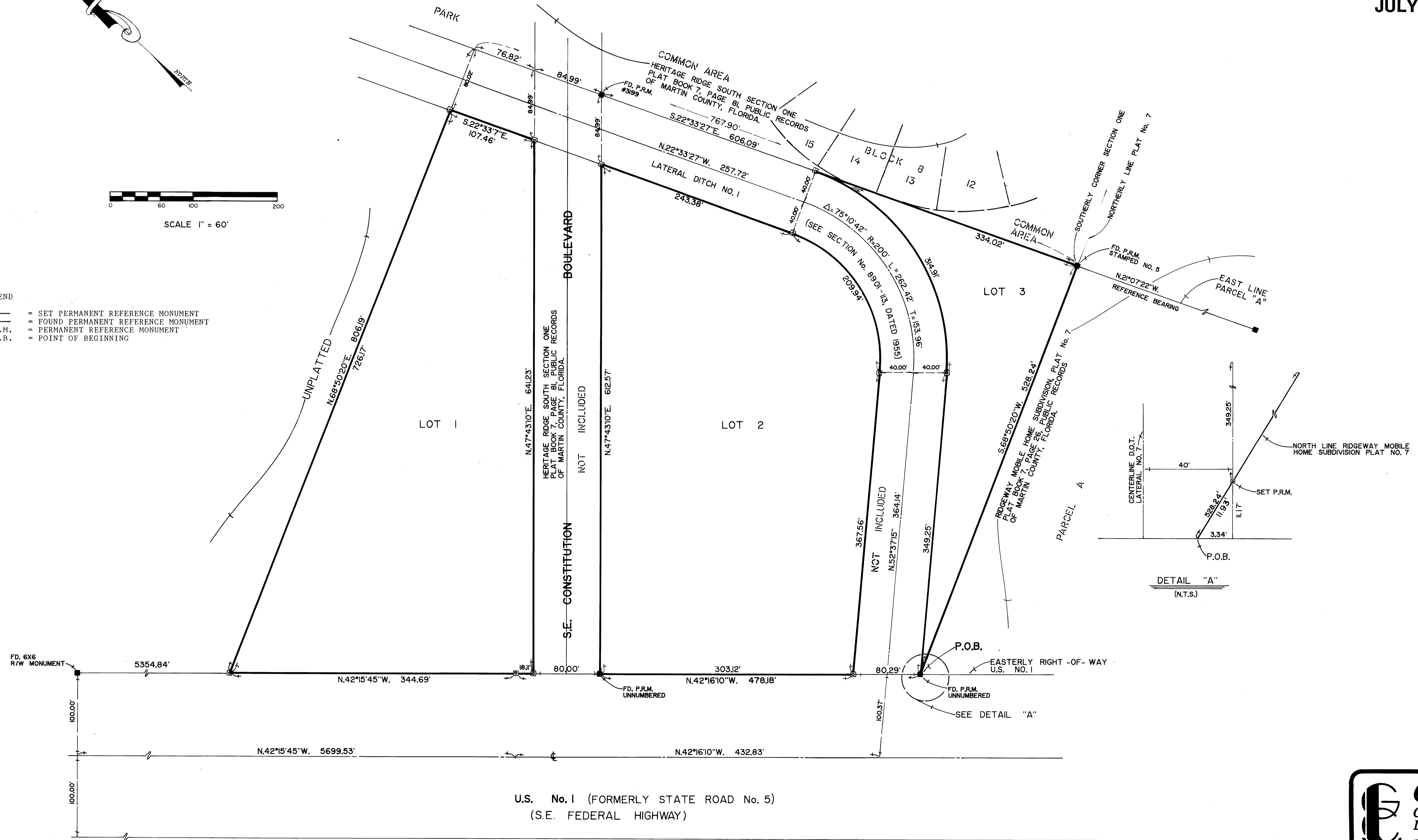
JULY 1989



SCALE 1" = 60'

LEGEND

- = SET PERMANENT REFERENCE MONUMENT
- = FOUND PERMANENT REFERENCE MONUMENT
- = PERMANENT REFERENCE MONUMENT
- = POINT OF BEGINNING



U.S. No. 1 (FORMERLY STATE ROAD No. 5)
(S.E. FEDERAL HIGHWAY)

GCY, Inc.
Civil Engineers & Land Surveyors
P.O. Box 1469
Palm City, Fl. 34990
Palm City 286-8083 Ft. Pierce 466-9500